



December 20<sup>th</sup>, 2022

## Continental Copper starts 2022-23 Field Season on 200 km<sup>2</sup> High Sulphidation Epithermal System in Cambodia

**Perth, Western Australia:** Continental Copper Director, John C Menzies, is pleased to announce that the 2022 field season at the **380 km<sup>2</sup> Khvav property in Cambodia** has commenced, after a protracted wet season.

Continental Copper has developed a unique understanding of the SE Asian geological and tectonic environment supported by a large regional whole rock geochemical and geochronological database and new regional scale mapping and structural analysis. This has been augmented by the acquisition and reprocessing of 2.1 million km<sup>2</sup> of satellite gravity data across mainland SE Asia and the digitization and processing of a 48,000 km<sup>2</sup> airborne gravity and magnetics survey in Cambodia.

Continental Copper has concluded that the copper and gold rich Loei Volcanic Arc in Thailand extends eastwards for 500 km as the Khvav Arc across central and northern Cambodia and hosts porphyry, vein and skarn copper-gold deposits of Triassic age. Three open pit and underground mines have been developed within this terrane in Cambodia and a number of porphyry Cu-Au deposits discovered.

The Loei-Khvav continental volcanic arcs which developed on the Indochina Block were generated by the subduction of the sediments and oceanic basalts of the Nan back-arc basin which closed in the late Triassic (200 million years ago). Following the subduction and closure of the Nan back-arc basin beneath the Indochina Block and the resulting collision of the Sukothai oceanic volcanic arc and the Sibumasu Gondwana terrane, there has been very little tectonic activity. The absence of tectonic activity and the deposition of thick Jurassic terrestrial sediments, which are now largely eroded, has resulted in the preservation of the volcanic arc rocks and alteration systems in the Continental Copper licence area.

Regional and project-based mapping by Continental Copper has discovered a previously unrecognized and unexplored 200km<sup>2</sup> high-sulphidation alteration system with a regionally extensive sub-horizontal massive silica-pyrite lithocap. Within this lithocap vertical structures host vuggy silica zones and hydrothermal breccias with abundant oxides after sulphides up to 400 metres wide (Figure 1). To the south and east of the licences there are two Cu-Au mines and mills (Figure 2).

The planned 2022-23 program which has commenced, includes surface geochemistry and diamond drilling. Systematic grid sampling and low detection ICPMS geochemistry to map the alteration system and target potentially Cu-Au bearing intrusions and epithermal mineralization is in progress. Diamond drilling will target outcropping vuggy silica-sulphide zones (Figure 1, Figure 4) with 500-metre-deep diamond drillholes. The entirely Cambodian field team is doing an excellent job in a challenging terrane.

No systematic exploration has been conducted within the licences due to poor access. However large-scale agricultural and forestry activity and road construction has reduced access issues and will minimize exploration impacts.

*John Menzies commented “We have been working in SE Asia since 2004 and developed a regional geological, geochemical, geophysical and geochronological database which we have used to generate a unique geological, structural and tectonic model for the region. After making a number of porphyry Cu-Au discoveries under-cover to the west of the Khvav licences we used this regional model to target the Khvav area. We have discovered an unexplored and large high-sulphidation alteration system which is well preserved. Rocks of identical geochemistry and likely similar age host Cu and Au mineralization to the south and east of the Khvav licences. This large high-sulphidation target is to our knowledge the largest such unexplored system in SE Asia.”*

*Richard Stanger commented, “We have decades of experience in Cambodia and have been involved in numerous minerals exploration and development project. Richard is the founding Chairman of the Cambodian Association of Mining and Exploration Companies (CAMEC) which has worked closely with the Government to develop a regulatory framework for the industry which provides both benefits for Cambodia and which is attractive for investors. It is our opinion that Cambodia has the best regulatory environment for the industry and is the most transparent of any country in SE Asia.”*



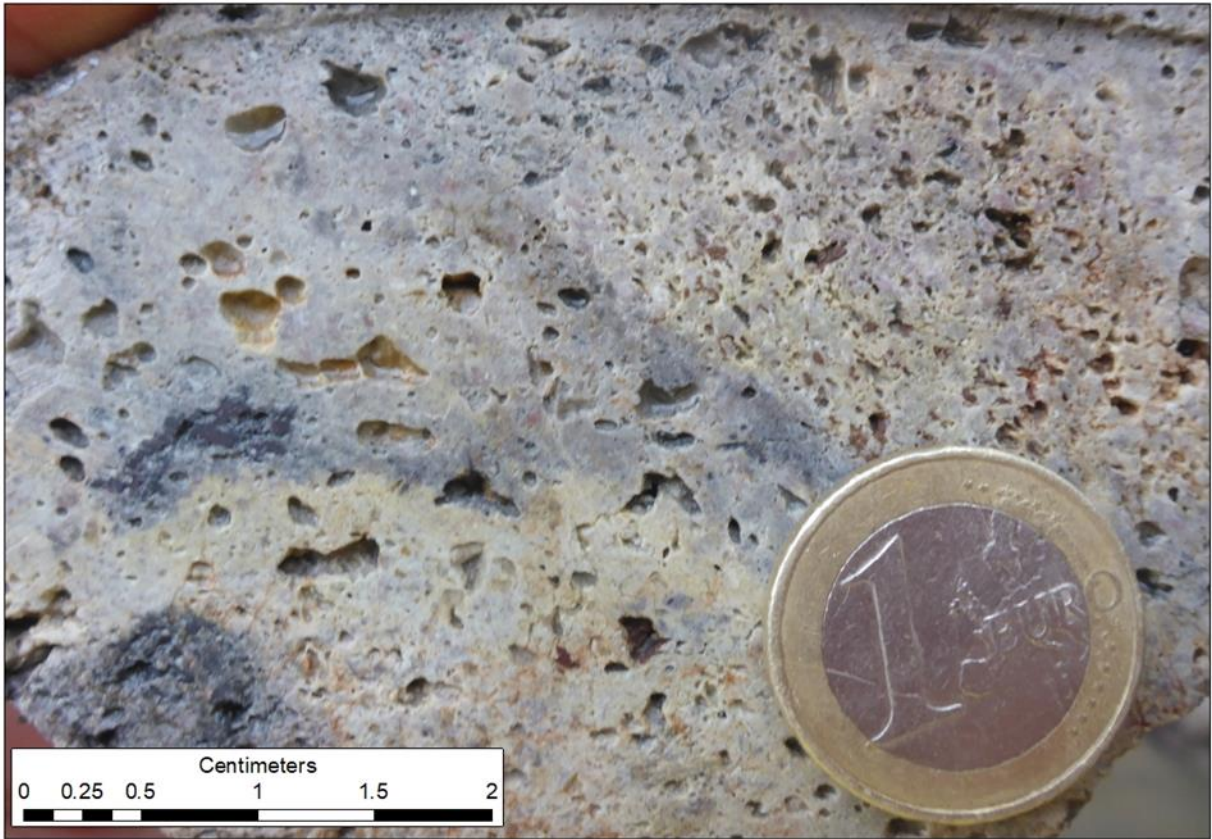
*Figure 1 Residual and vuggy silica ridge - The Cliffs Prospect – Khvav Project, Cambodia. The Cliffs vuggy silica and vuggy silica breccia extends over a width of more than 500 metre and along a strike of 4km.*



*Figure 2 The Khvav open-pit Cu-Au mine just outside to the south of the Continental Copper exploration licences*



*Figure 3 Massive sub-horizontal lithocap forming prominent cliffs*



*Figure 4 Vuggy silica outcrop at The Cliffs prospect*

### About Continental Copper

Continental Copper Pty Ltd is a privately held corporation that is exploring for gold and base metals in SE Asia and the Cloncurry district of Queensland. The Directors of Continental Copper have decades of experience in SE Asia and have developed a unique understanding of SE Asian geology supported by a large regional whole rock geochemistry database and regional scale geophysics, mapping and structural analysis. Continental Copper has concluded that the copper and gold rich Loei Volcanic Arc extends eastwards as the Khvav Arc across Cambodia and hosts porphyry copper, vein and skarn copper-gold deposits including several operating mines. In Queensland, Continental Copper hold 980 km<sup>2</sup> north and west of the Ernest Henry Cu-Au mine and has delineated coincident untested geophysical and geochemical anomalies adjacent to major regional structures.

### Contact Information

John C. Menzies  
Richard F Stanger  
Andrew S James

[continental-copper@cmi-capital.com](mailto:continental-copper@cmi-capital.com)

### Forward-Looking Statements

Certain statements herein may constitute “forward-looking statements or “forward-looking information” within the meaning of applicable securities laws. Such statements involve known and unknown risks, uncertainties and other factors, which may cause actual results, performance or achievements of the Company or industry results, to be materially different from any future results,

performance or achievements expressed or implied by such forward-looking statements or information. Such statements can be identified by the use of words such as “may”, “would”, “could”, “will”, “intend”, “expect”, “believe”, “plan”, “anticipate”, “estimate”, “scheduled”, “forecast”, “predict” and other similar terminology, or state that certain actions, events or results “may”, “could”, “would”, “might” or “will” be taken, occur or be achieved. These statements reflect the Company’s current expectations regarding future events, performance and results, and speak only as of the date of this new release. Readers are cautioned not to place undue reliance on forward-looking information or statements. Although the forward-looking statements contained herein are based upon what management of the Company believes are reasonable assumptions, the Company cannot assure readers that actual results will be consistent with these forward-looking statements. These forward looking-statements are made as of the date beforementioned and are expressly qualified in their entirety by this cautionary statement. Subject to applicable securities laws, the Company does not assume any obligation to update or revise the forward-looking statements contained herein to reflect events or circumstances occurring after the date beforementioned.